

SRBIJA / CRNA GORA
SERBIA / MONTENEGRO

AGENCIJA ZA KONTROLU LETENJA SRBIJE I CRNE GORE d.o.o. /
SERBIA AND MONTENEGRO AIR TRAFFIC SERVICES AGENCY Ltd.
SLUŽBA VAZDUHOPLOVNOG INFORMISANJA / AERONAUTICAL INFORMATION SERVICE
Trg Nikole Pašića 10 11000 Beograd Serbia AFS: LYBBYOYX
TEL: + 381 11 321 8050 321 8051 FAX: + 381 11 324 0456 e-mail: ais@smatsa.rs

AIRAC AIP
SUP 3/11
3 NOV

Stupa na snagu / Effective Date
15 DEC 11

**AD BEOGRAD/BATAJNICA – PRIVREMENI POSTUPCI
BEOGRAD/BATAJNICA AD – TEMPORARY PROCEDURES**

Ovaj AIRAC AIP SUP sadrži privremene postupke za standardne instrumentalne dolaske, instrumentalno prilaženje i standardne instrumentalne odlaske za AD BEOGRAD/Batajnica.

Privremeni postupci su na snazi zbog neispravnosti VOR BEO.

This AIRAC AIP SUP contains temporary STAR, instrument approach and SID procedures for BEOGRAD/Batajnica AD.

Temporary procedures are effective due to VOR BEO unserviceability.

REF: AIP Serbia / Montenegro

AD 2 LYBT 5.1–1, AD 2 LYBT 5.1–5, AD 2 LYBT 6.2–1, AD 2 LYBT 6.5–1, AD 2 LYBT 6.5–3,
AD 2 LYBT 8.1–1, AD 2 LYBT 8.1–2, AD 2 LYBT 8.1–5, AD 2 LYBT 8.1–6

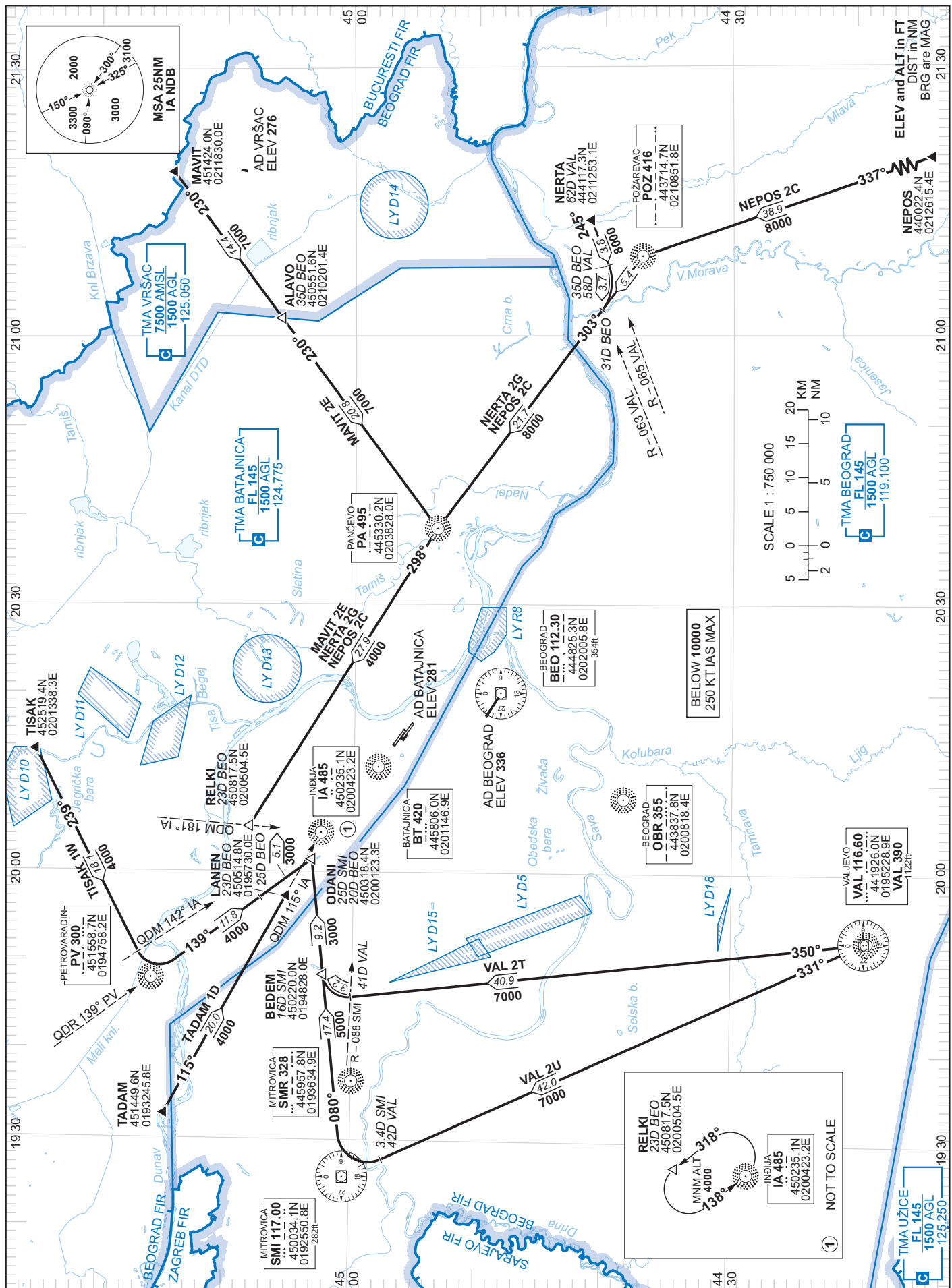
STANDARD ARRIVAL CHART
INSTRUMENT (STAR) – ICAO

VAR 4° E (2010)

TRANSITION
ALTITUDE 10000

APP 124.775
TWR 124.775

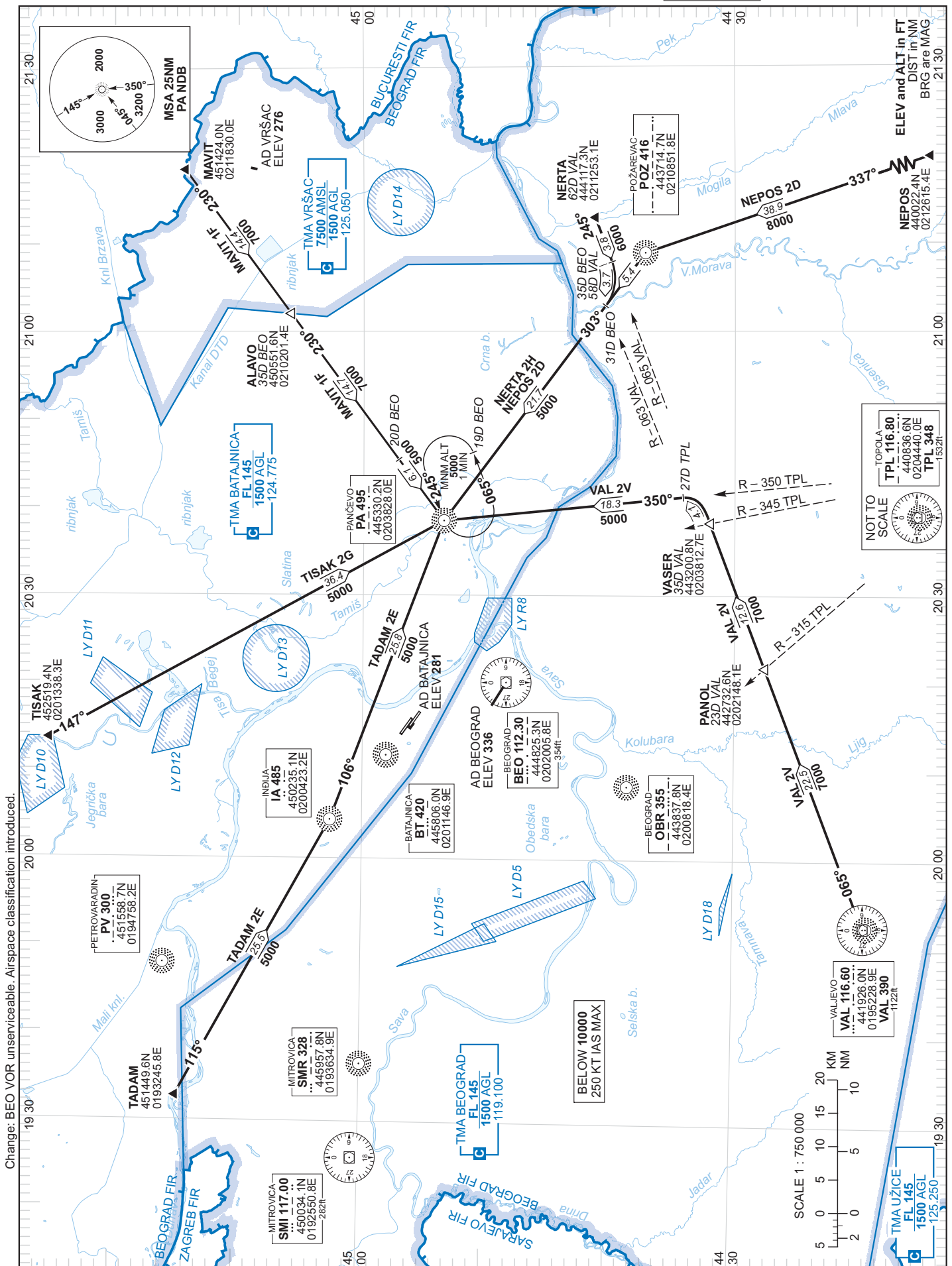
BEOGRAD/
Batajnica
RWY 12L



Change: BEO VOR unserviceable. Airspace classification introduced.

APP 124.775
TWR 124.775

BEOGRAD/
Batajnica
RWY 30R



Change: BEO VOR unserviceable. Airspace classification introduced.

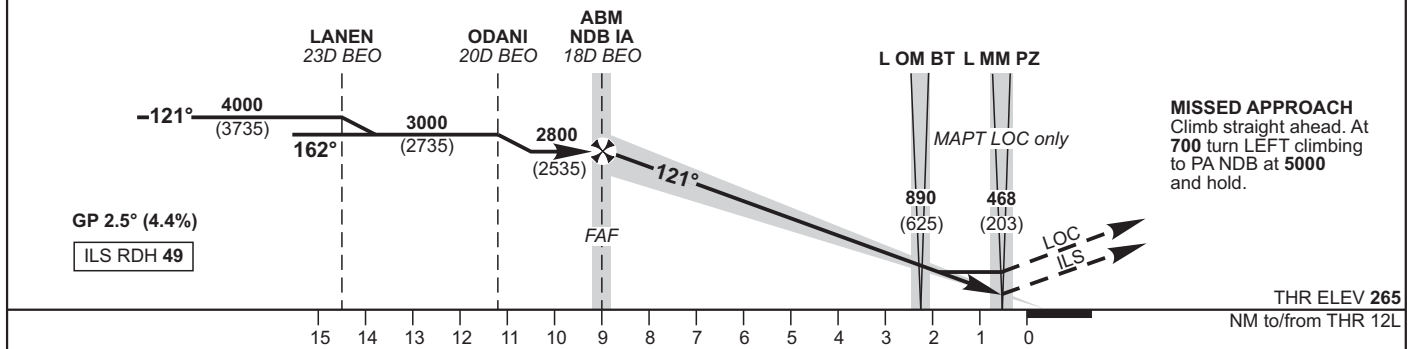
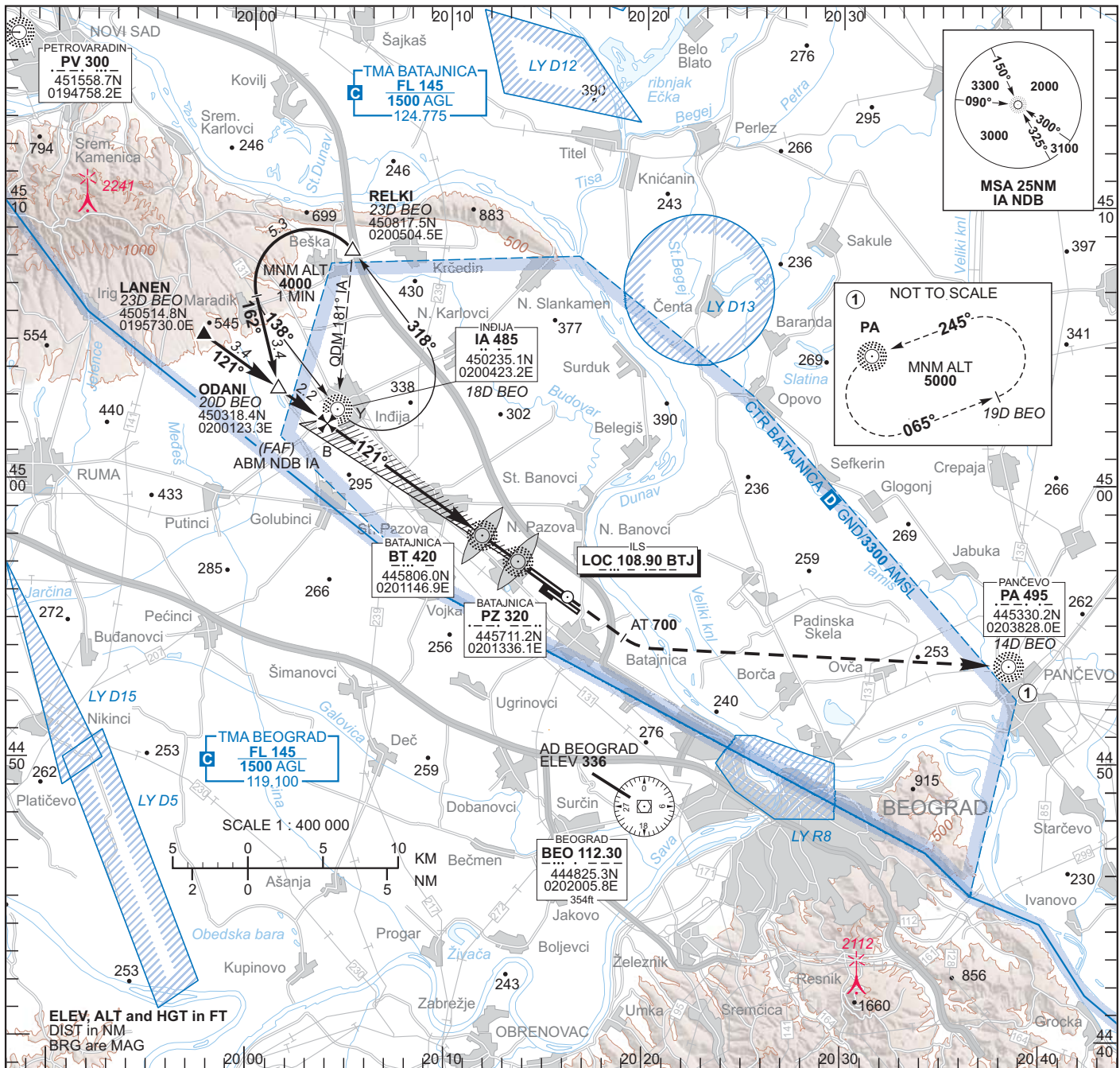
INSTRUMENT APPROACH CHART – ICAO

VAR 4° E (2010)

AD ELEV 281
HEIGHTS RELATED TO THR 12L ELEV 265

APP 124.775
TWR 124.775

BEOGRAD/Batajnica ILS RWY 12L



Change: BEO VOR unserviceable. Airspace classification introduced.

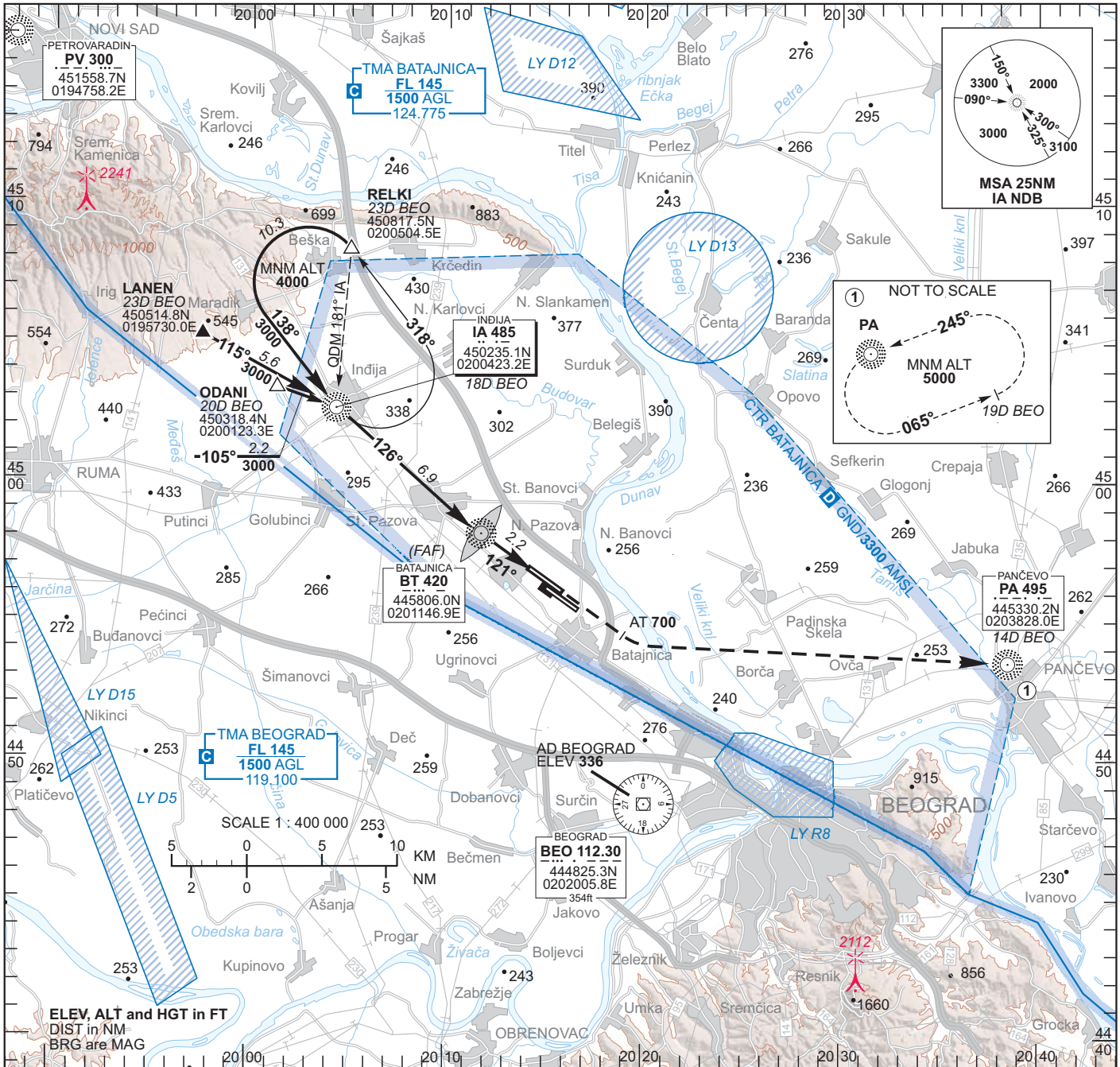
INSTRUMENT APPROACH CHART – ICAO

VAR 4° E (2010)

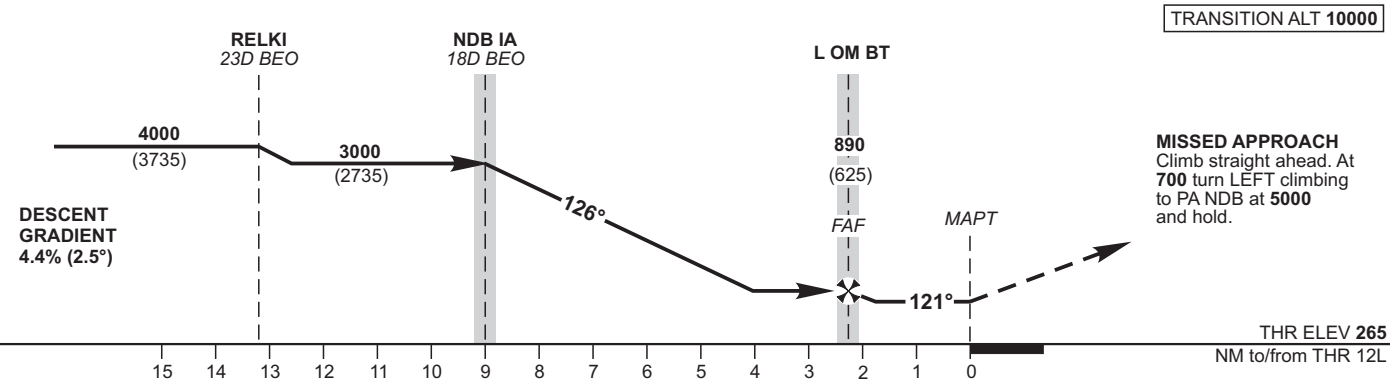
AD ELEV 281
HEIGHTS RELATED TO THR 12L ELEV 265

APP TWR 124.775
124.775

BEOGRAD/ Batajnica NDB RWY 12L



Change: BEO VOR unserviceable. Airspace classification introduced.



OCA (H)	A	B	C	D	GS	KT	70	100	120	140	160	180	200
Straight-in Approach	640 (374)				L BT to MAPT 2.2NM	min:s	1:53	1:19	1:06	0:56	0:49	0:44	0:39
					Rate of descent	FPM	311	442	530	621	717	800	851
* Circling to RWY 30R	680 (399)	780 (499)	870 (589)	970 (689)	* Circling SW of aerodrome NA.								

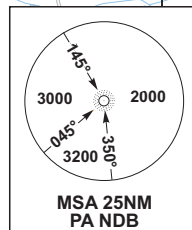
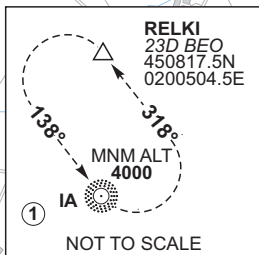
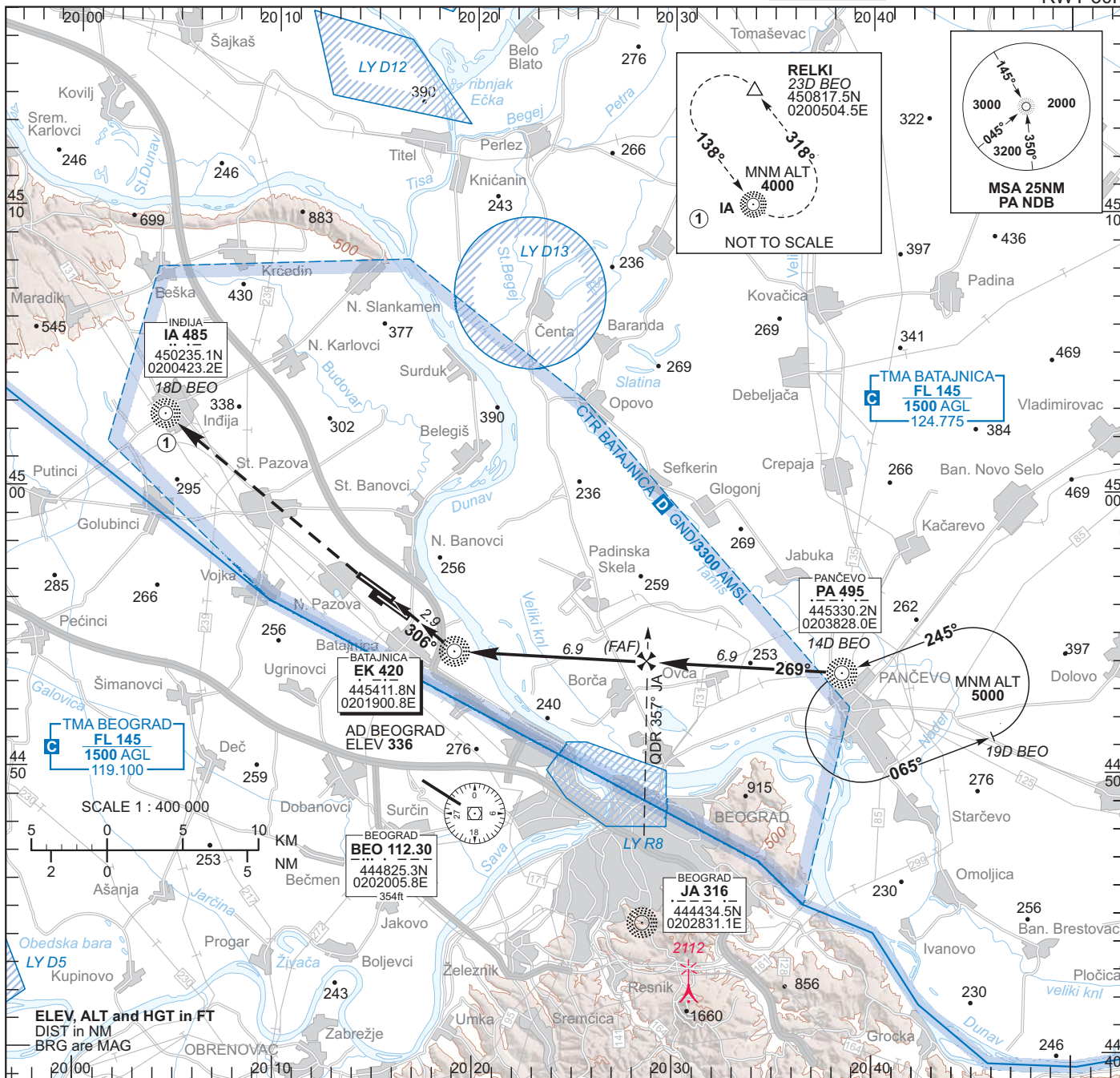
INSTRUMENT APPROACH CHART – ICAO

VAR 4° E (2010)

AD ELEV 281
HEIGHTS RELATED TO AD ELEV 281

APP 124.775
TWR 124.775

BEOGRAD/ Batajnica NDB RWY 30R



NOT TO SCALE

NOT TO SCALE

NOT TO SCALE

NOT TO SCALE

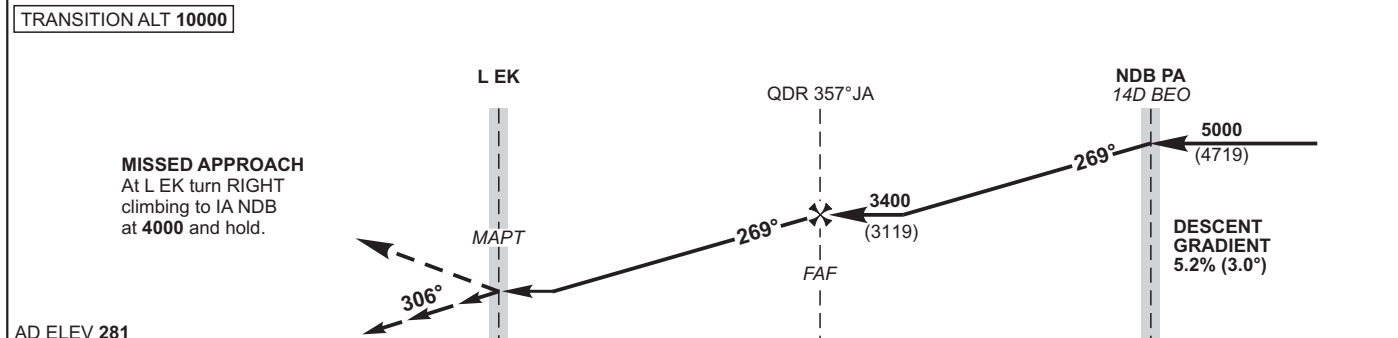
NOT TO SCALE

NOT TO SCALE

NOT TO SCALE

NOT TO SCALE

NOT TO SCALE



AD ELEV 281
NM to/from THR 30R

OCA (H)	A	B	C	D	GS	KT	70	100	120	140	160	180	200
Straight-in Approach					Rate of descent	FPM	371	530	636	742	848	954	1060
					MAPT at L EK								
Visual manoeuvring	680 (399)	780 (499)	870 (589)	970 (689)									

Change: BEO VOR unserviceable. Airspace classification introduced.

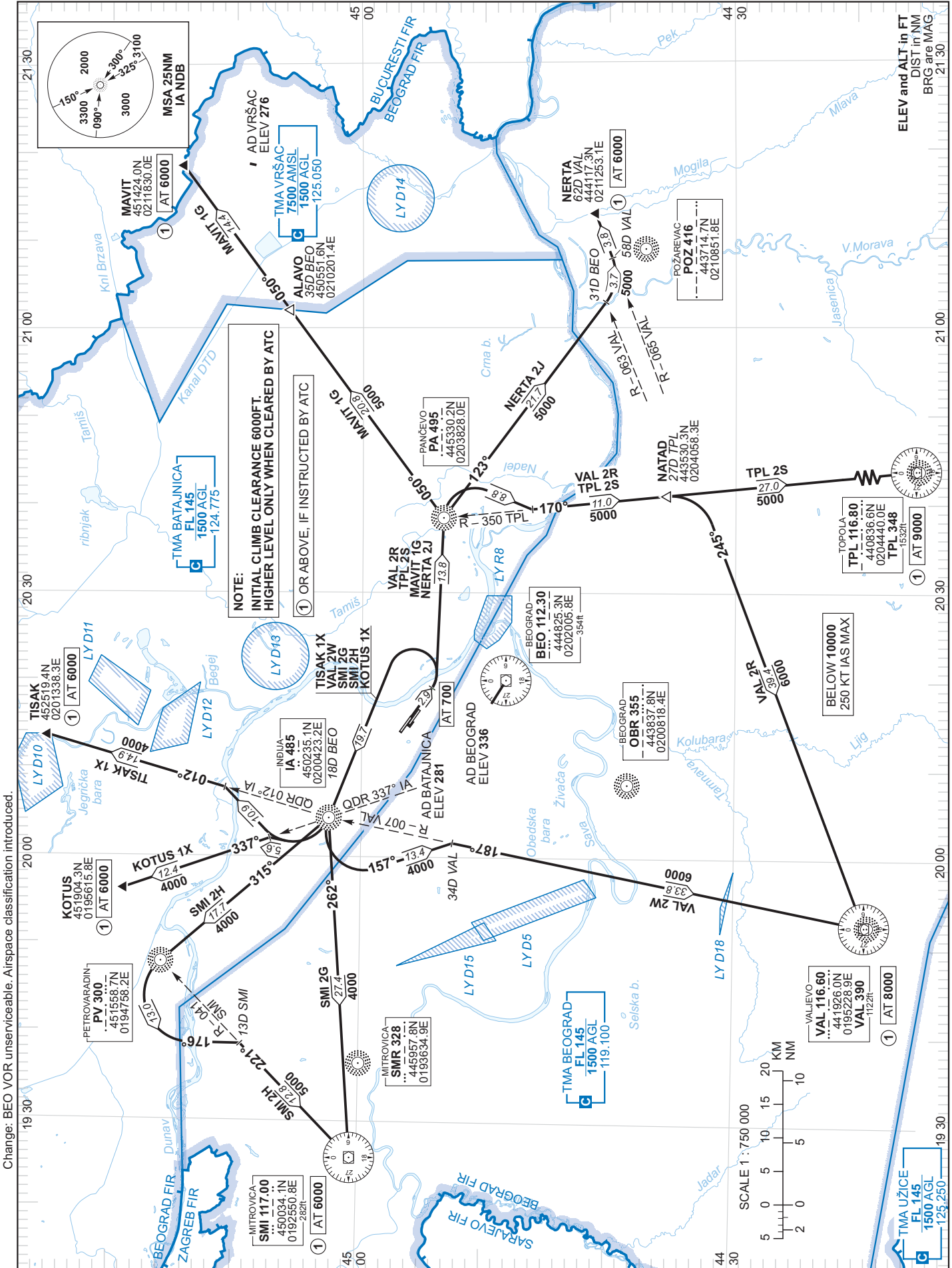
STANDARD DEPARTURE CHART
INSTRUMENT (SID) – ICAO

VAR 4° E (2010)

TRANSITION
ALTITUDE 10000

APP 124.775
TWR 124.775

BEOGRAD/
Batajnica
RWY 12L



Change: BEO VOR unserviceable. Airspace classification introduced.

RWY 12L DEPARTURES

Note: initial climb clearance 6000FT. Higher level only when cleared by ATC.

<i>SID designator</i>	<i>Lateral</i>	<i>Vertical</i>
MAVIT 1G (MAVIT ONE GOLF)	Climb straight ahead. At 700FT turn LEFT inbound PA NDB. At PA NDB turn LEFT onto PA QDR 050° climbing to MAVIT.	MAVIT at 6000FT (or above, if instructed by ATC).
NERTA 2J (NERTA TWO JULIETT)	Climb straight ahead. At 700FT turn LEFT inbound PA NDB. At PA NDB turn RIGHT onto POZ QDM 123° inbound POZ NDB. At 31D BEO (VAL R-063) turn LEFT intercept and follow VAL R-065 climbing to NERTA.	NERTA at 6000FT (or above, if instructed by ATC).
TPL 2S (TOPOLA TWO SIERRA)	Climb straight ahead. At 700FT turn LEFT inbound PA NDB. At PA NDB turn RIGHT intercept and follow TPL R-350 climbing to TPL VOR DME.	TPL VOR DME at 9000FT (or above, if instructed by ATC).
VAL 2R (VALJEVO TWO ROMEO)	Climb straight ahead. At 700FT turn LEFT inbound PA NDB. At PA NDB turn RIGHT intercept and follow TPL R-350. At NATAD turn RIGHT intercept and follow VAL R-065 climbing to VAL VOR DME.	VAL VOR DME at 8000FT (or above, if instructed by ATC).
VAL 2W (VALJEVO TWO WHISKEY)	Climb straight ahead. At 700FT turn LEFT inbound IA NDB. At IA NDB turn LEFT onto course 157°. At 34D VAL turn RIGHT intercept and follow VAL R-007 climbing to VAL VOR DME.	VAL VOR DME at 8000FT (or above, if instructed by ATC).
SMI 2G (MITROVICA TWO GOLF)	Climb straight ahead. At 700FT turn LEFT inbound IA NDB. At IA NDB turn LEFT intercept and follow SMI R-082 climbing to SMI VOR DME.	SMI VOR DME at 6000FT (or above, if instructed by ATC).
SMI 2H (MITROVICA TWO HOTEL)	Climb straight ahead. At 700FT turn LEFT inbound IA NDB. At IA NDB turn RIGHT proceed onto PV QDM 315° inbound PV NDB. At PV NDB turn LEFT onto course 176°. At 13D SMI turn RIGHT intercept and follow SMI R-041 climbing to SMI VOR DME.	SMI VOR DME at 6000FT (or above, if instructed by ATC).
KOTUS 1X (KOTUS ONE XRAY)	Climb straight ahead. At 700FT turn LEFT inbound IA NDB. At IA NDB turn RIGHT onto IA QDR 337° climbing to KOTUS.	KOTUS at 6000FT (or above, if instructed by ATC).
TISAK 1X (TISAK ONE XRAY)	Climb straight ahead. At 700FT turn LEFT inbound IA NDB. At IA NDB turn RIGHT onto IA QDR 012° climbing to TISAK.	TISAK at 6000FT (or above, if instructed by ATC).

RWY 30R DEPARTURES

Note: initial climb clearance 6000FT. Higher level only when cleared by ATC.

<i>SID designator</i>	<i>Lateral</i>	<i>Vertical</i>
MAVIT 2H (MAVIT TWO HOTEL)	Climb straight ahead. At 700FT turn RIGHT inbound PA NDB. At PA NDB turn LEFT onto PA QDR 050° climbing to MAVIT.	MAVIT at 6000FT (or above, if instructed by ATC).
NERTA 2K (NERTA TWO KILO)	Climb straight ahead. At 700FT turn RIGHT inbound PA NDB. Cross PA NDB, proceed onto POZ QDM 123° inbound POZ NDB. At 31D BEO (VAL R-063) turn LEFT intercept and follow VAL R-065 climbing to NERTA.	NERTA at 6000FT (or above, if instructed by ATC).
TPL 2V (TOPOLA TWO VICTOR)	Climb straight ahead. At 700FT turn RIGHT inbound PA NDB. At PA NDB turn RIGHT intercept and follow TPL R-350 climbing to TPL VOR DME.	TPL VOR DME at 9000FT (or above, if instructed by ATC).
VAL 2K (VALJEVO TWO KILO)	Climb straight ahead inbound IA NDB. At IA NDB turn LEFT onto course 157°. At 35D VAL turn RIGHT intercept and follow VAL R-007 climbing to VAL VOR DME.	IA NDB at 3000FT or above; VAL VOR DME at 8000FT (or above, if instructed by ATC).
VAL 2X (VALJEVO TWO X-RAY)	Climb straight ahead. At 700FT turn RIGHT inbound PA NDB. At PA NDB turn RIGHT intercept and follow TPL R-350. At NATAD turn RIGHT intercept and follow VAL R-065 climbing to VAL VOR DME.	VAL VOR DME at 8000FT (or above, if instructed by ATC).
SMI 2J (MITROVICA TWO JULIETT)	Climb straight ahead inbound IA NDB. At IA NDB turn LEFT intercept and follow SMI R-082 climbing to SMI VOR DME.	IA NDB at 3000FT or above; SMI VOR DME at 6000FT (or above, if instructed by ATC).
SMI 2K (MITROVICA TWO KILO)	Climb straight ahead inbound IA NDB. Cross IA NDB, proceed onto PV QDM 315° inbound PV NDB. At PV NDB turn LEFT onto course 176°. At 13D SMI turn RIGHT intercept and follow SMI R-041 climbing to SMI VOR DME.	IA NDB at 3000FT or above; SMI VOR DME at 6000FT (or above, if instructed by ATC).
KOTUS 1Y (KOTUS ONE YANKEE)	Climb straight ahead inbound IA NDB. At IA NDB turn RIGHT onto IA QDR 337° climbing to KOTUS.	KOTUS at 6000FT (or above, if instructed by ATC).
TISAK 1Y (TISAK ONE YANKEE)	Climb straight ahead inbound IA NDB. At IA NDB turn RIGHT onto IA QDR 012° climbing to TISAK.	TISAK at 6000FT (or above, if instructed by ATC).